

正面

反面

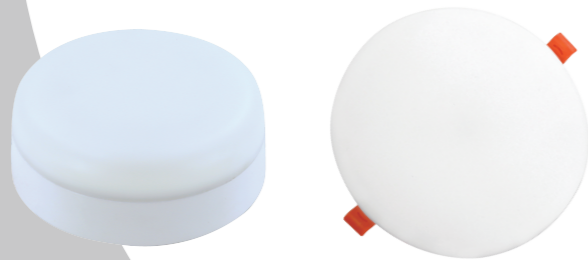
安装和操作说明

LED面板灯系列

INSTALLATION & OPERATION INSTRUCTIONS

-LED Panel Light Series

Dear customer:
Thank you for choosing our products,
Please read the instruction carefully before using,
and keep this instruction well just in case.



Production date: _____
Inspector: _____
This product is qualified for inspection

尊敬的客户：
感谢您选择我们的产品，
使用前请仔细阅读说明，
并保留此指令以防万一。

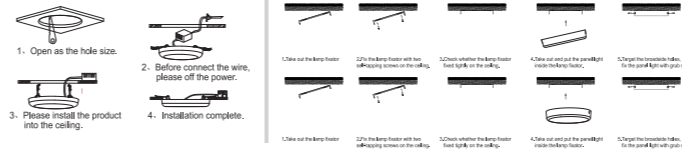
生产日期：
检查员：
本产品符合检查要求

Panel Light Installation Instructions

Installation Notes:

1. This product should be installed by a professional electrician.
2. Please check the products before installing.
3. Please keep the products away from the inflammable materials at least 0.2m, and distinguish between the high voltage wire and the low voltage wire.
4. Please keep the connection wire of products connecting, and make sure they are fastened.
5. Please keep the wire long enough for installing, and do not tie the wires. Please distinguish between the input voltage and output voltage, and also do not mix with other products.
6. Please connect the input of the product and output of LED driver together.
7. Please connect the input of LED driver and AC (Alternating current) together. Normally, the brown wire is the Live wire, connect it with the terminal marked "L". The blue wire is Neutral wire; connect it with the terminal marked "N".
8. Please use only the LED driver included, and do not connect to other loads.

Installation Diagram



Instructions:

1. Please confirm the product not damage during transport before using.
2. For dimensions, see the product back cover.
3. AC 170V-240V, 50/60Hz, The latest efficient constant driver.
4. Quick start, Flicker free, No Electric Noise.
5. Accord with ROHS standard.

Cautions:

1. For indoor use only.
2. Please confirm if there is any damage in transport before using.
3. Please keep the packaging material away from children and pets.
Caution: The packaging contains small parts that may be swallowed by children.
4. Please keep kids away from products, and do not allow them to touch electrical devices.
5. Please avoid looking straight into the LED light-emitting surface for a long time.
6. Please do not cover the lights by other objects. Never allow the fixture to come into contact with open flames or external heat sources.
7. Any maintenance should be performed by professionals only, or we have right to refuse warranty services.
8. Please turn off the power before clear the product, and clear with dry towel, do not use something chemical or corrosive.

Application Field:

In Hotel, Meeting room, Manufactory or Office, Apartment or Public, Commercial lighting, School, Hospital etc.

面板灯安装说明

安装说明:

1. 本产品应由专业电工安装。
2. 安装前请检查产品。
3. 请至少将产品远离易燃物品 0.2m, 并区分高压导线和低压导线。
4. 请保持产品的连接线连接, 并确保它们被紧固。
5. 请保持电线长度足够安装, 不要绑扎电线。请区分输入电压和输出电压, 也要做不与其他产品混合。
6. 请将产品的输入和LED驱动器的输出连接在一起。
7. 请将LED驱动器和交流(交流)的输入连接在一起。通常, 棕色线是火线, 将其与标有“L”的端子连接。蓝色线是中性线; 将其与标有“N”的端子连接。
8. 请仅使用包含的LED驱动器, 并且不要连接到其他负载。

安装图

说明:

1. 使用前请确认产品在运输过程中不损坏。
2. 有关尺寸, 请参阅产品后盖。
3. 交流170V-240V, 50 / 60Hz, 最新的高效恒定驱动器。
4. 快速启动, 无闪烁, 无电噪声。
5. 符合ROHS标准。

注意事项:

1. 仅供室内使用。
2. 使用前请确认运输是否有任何损坏。
3. 请保持包装材料远离儿童和宠物。
注意: 包装中包含可能被儿童吞服的小部件。
4. 请让孩子远离产品, 不要让他们触摸电气设备。
5. 请避免直视LED发光表面很长时间。
6. 请勿用其他物体遮住灯光。不要让夹具进入接触明火或外部热源。
7. 任何维修应由专业人员执行, 或我们有拒绝保修服务。
8. 清洁产品前, 请关闭电源, 并用干毛巾清洁, 不要使用某些化学或腐蚀性。

应用领域:

酒店, 会议室, 工厂或办公室, 公寓或公共, 商业照明, 学校, 医院等